

# MAREAZUL

RIVIERA MAYA BEACHFRONT RESIDENCES





# LOCATION

**Mareazul Beachfront Residences** is located within Corasol Real Estate development, a high-end residential area, with a white sand beach, right in front of Cozumel coast, surrounded by the tropical rainforest, natural beauty, tranquility, privacy and a great weather almost perfect to enjoy the beach all the year.

The privileged location of **Mareazul Beachfront Residences** allows you to be in the heart of the Riviera Maya. Just at 30 minutes from Cancun's International Airport and 5 minutes from the beautiful city of Playa del Carmen.







The **Corasol Master Plan** enhances one of the most prestigious luxury Real Estate developments in the country.

**Corasol** has its 18-hole Golf Course designed by prestigious golfer Nick Price, as well as a Club House, a small convenience store, and impeccable restaurants.

Built between a stunning beach and a magnificent Golf course, within the **Corasol Master Plan**, are the exclusive luxury apartments of Mareazul, Nick Price Residences, and Lorena Ochoa, where each development has excellent spaces inside and outside the condominium.

**Corasol** has 200 hectares of architecture and is composed of different high-end Real Estate developments: Nick Price Residences, Lorena Ochoa, and Mareazul Beachfront Residences.



# MAREAZUL

RIVIERA MAYA BEACHFRONT RESIDENCES

**Mareazul Beachfront Residences** is unique real estate development on the Riviera Maya. Location is the key and Mareazul is part of the master plan of Corasol, the perfect place for those looking for security, privacy and exclusivity:

With a spectacular beach nuanced by the Caribbean Sea and a worldwide class Golf Course, Mareazul has luxury condos and a beach club within a world class ecosystem.

Invest in this extraordinary space that stands out for its natural beauty, big pools, Zen areas, outdoor restaurants, playground, and the endless experience that **Mareazul Beachfront Residences** offers.

**Our condos are completely finished and ready to be delivered.**





## Master Plan



- 1** Mareazul Oceanfront Residences
- 2** Beach Club
- 3** Residencias by Lorena Ochoa Corasol Riviera Maya
- 4** Nick Price Residences Corasol Riviera Maya
- 5** Gran Coyote Golf & Club House

# MAREAZUL

RIVIERA MAYA BEACHFRONT RESIDENCES



● Buildings 6, 7  
Units of 2 rooms

● Buildings 2  
Units of 4 rooms

● Buildings 1, 3, 4, 5  
Units of 2 and 3 rooms







In Mareazul Beachfront Residences you can always reach the water's relaxation and repairing effects. Our swimming pool is 426 feet long and our beach has a 656 feet front, with a great variety of water and land activities along the day, including kite surfing, tennis, paddle y swimming.

## ATTRIBUTES

“Service and quality are achieved only step by step with sustained hard work, a relentless attention to details and perseverance on the highest standards of quality and performance.”

**Mareazul Beachfront Residences** materialize ultimate high standard of luxury, exclusivity and service.

Be amazed with the awesome ocean views, luxury finishes of every condo, gym and spa and with the outstanding service of our staff.



# AMENITIES

Standards are redefined with the superior amenities of **Mareazul Beachfront Residences**.

Among the facilities, you will find amenities such as a world-class Golf Course designed by Nick Price with 18 holes, driving range and practice green area. Membership is included for owners.



More than 200 m Beach Front



Botanical Garden with Mayan sculptures



Gym



Luxury Finishes



Tennis and paddle courts



Large terraces with private jacuzzi



Magnificent views of the Sea & Garden



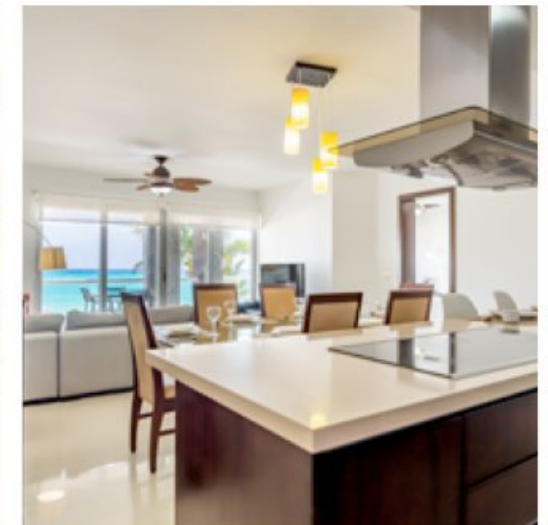
Golf Course



3,230 ft<sup>2</sup> Swimming pool



Spa for Men and Women



# FLOOR PLAN RESIDENCES



**B**  
 Department  
 2 Rooms | 3 Bathrooms  
 Total Area:  
 165.05 m<sup>2</sup> / 1,776.62 ft<sup>2</sup>



**C**  
 Department  
 2 Rooms | 3 Bathrooms  
 Total Area:  
 171.10 m<sup>2</sup> / 1,841.73 ft<sup>2</sup>



**D**  
 Department  
 3 Rooms | 4.5 Bathrooms  
 Total Area:  
 218.99 m<sup>2</sup> / 2,357.30 ft<sup>2</sup>



**E**  
 Department  
 4 Rooms | 5.5 Bathrooms  
 Total Area:  
 305.69 m<sup>2</sup> / 3,290.45 ft<sup>2</sup>







# MAREAZUL

RIVIERA MAYA BEACHFRONT RESIDENCES